

54/182

TIFFANY TRACE

PALM AIRE EAST P.U.D.

Sheet 3 of 3 Sheets

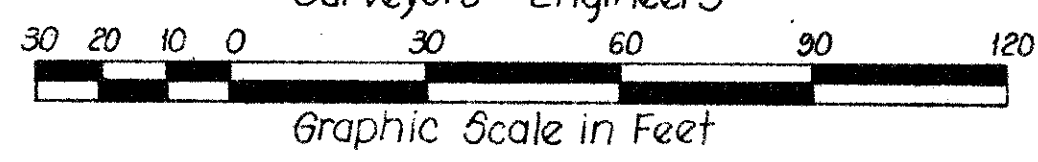
A RESUBDIVISION OF TRACT A-1 BOCA GOLF AND TENNIS CLUB SECTION I (48-79.80 & 81)
IN SECTION 31, TOWNSHIP 46 SOUTH, RANGE 43 EAST
Palm Beach County, Florida

Winningham & Lively, Inc.

Surveyors - Engineers

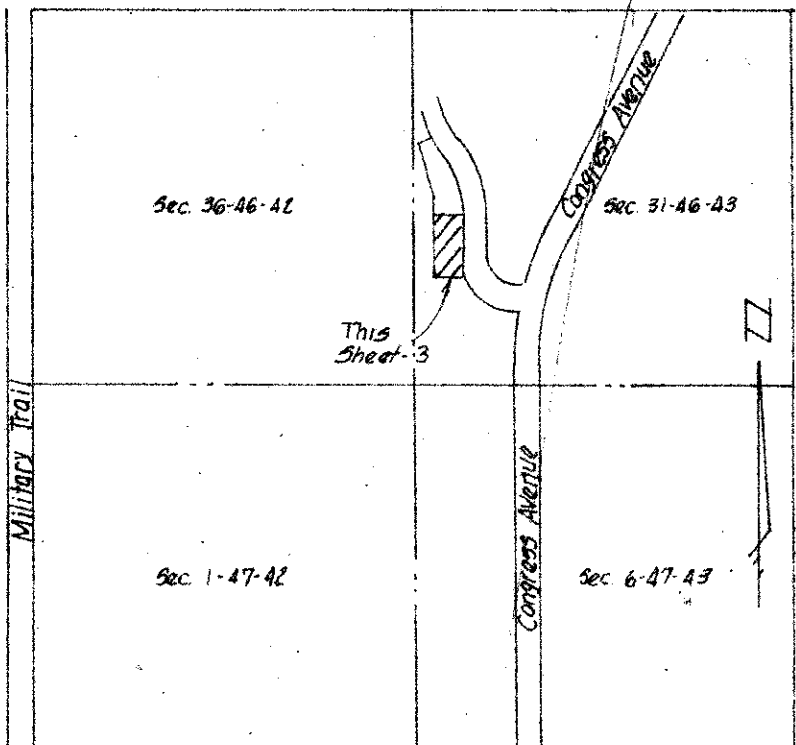
Fort Lauderdale, Florida

Scale: 1" = 30'

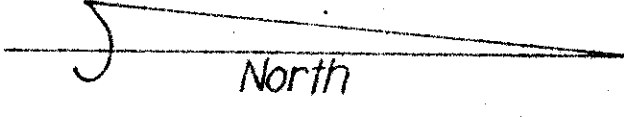


December, 1985

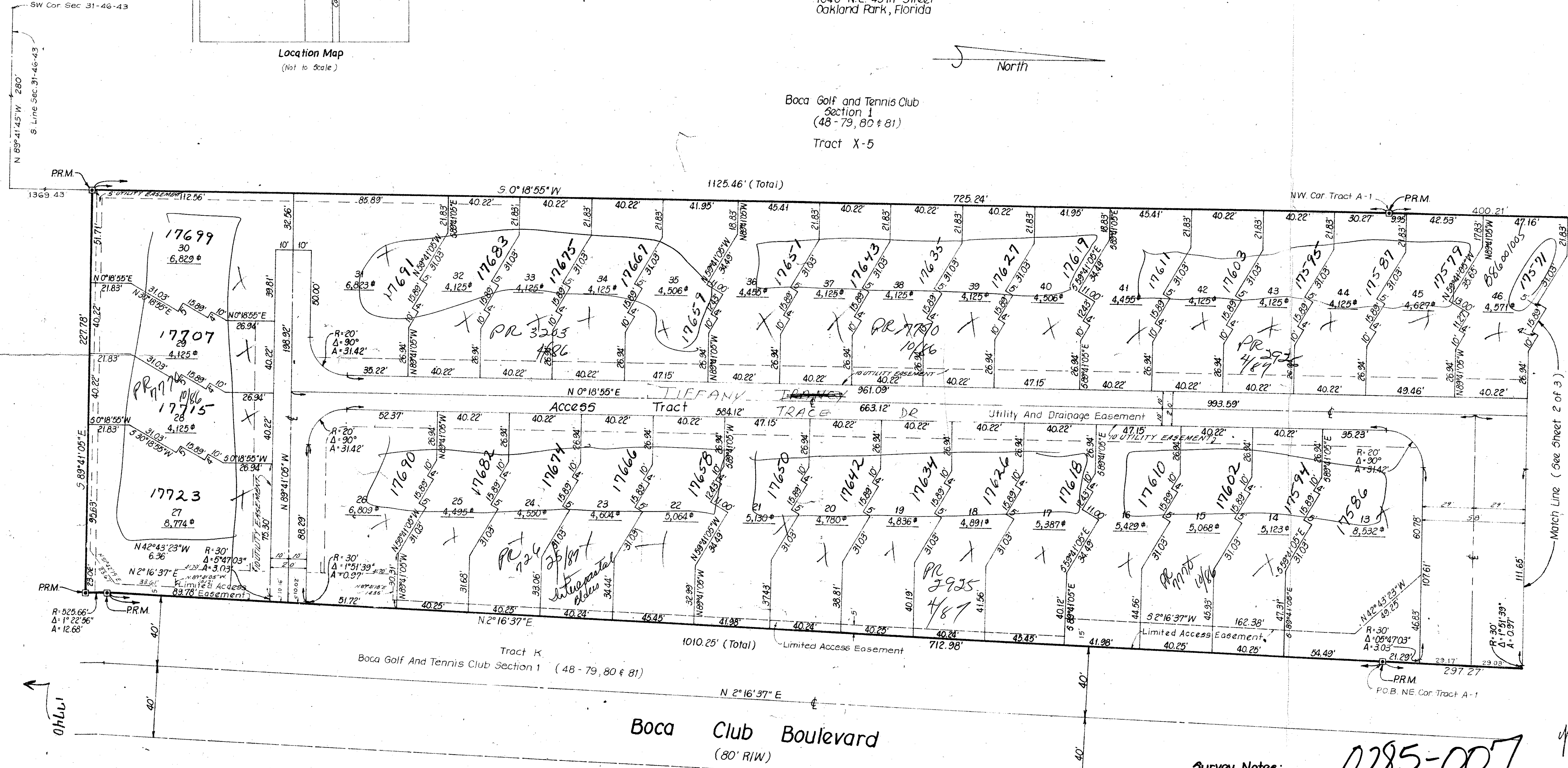
This Instrument Prepared By:
Charlie C. Winningham II, Winningham & Lively, Inc.
1040 N.E. 45th Street
Oakland Park, Florida



Location Map
(Not to Scale)



Boca Golf and Tennis Club
Section I
(48-79, 80 & 81)
Tract X-5



Match Line (See Sheet 2 of 3)

Tract K
Boca Golf and Tennis Club Section I (48-79, 80 & 81)

Boca Club Boulevard
(80' R/W)

Tract "B"

Survey Notes:

1. [Symbol] - Indicates Permanent Reference Monument (PRM).
2. Bearings are based on an assumed Meridian.
3. There shall be no buildings or any kind of construction placed on Utility or Drainage Easements.
4. There shall be no structures, trees or shrubs placed on Drainage Easements.
5. Approval of landscaping on utility easements other than water and sewer shall be only with the approval of all utilities occupying same.

APP. BY [Signature]
CHECKED BY [Signature]

0285-007

Handwritten notes and signatures: 11/21/86, 3/16/83, Tiffany Trace, 54, 182, 22, 33431, John B. Dunkle

TIFFANY TRACE 54/182

State of Florida 5.0
County of Palm Beach
This Plat was filed for record at _____ on the _____ day of _____ 198____, and duly recorded in Plat Book _____ Pages _____
John B. Dunkle
Clerk of Circuit Court
By: _____

DRAWING NUMBER

DRAWING NUMBER

DRAWING NUMBER

PLAN HOLD CORPORATION • IRVINE, CALIFORNIA
REGISTERED NUMBER 07548